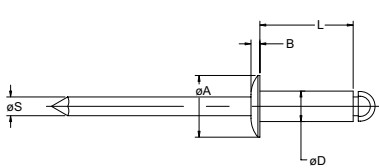
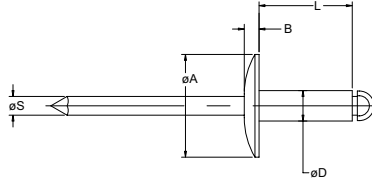


N Rivet AAPS / AALS / AACS

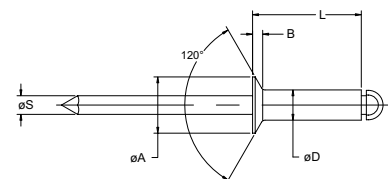
English	Français	Deutsch	Italiano	Español
Body: Aluminium 5052 Natural	Corps: Aluminium 5052 Brut	Hülse: Aluminium 5052 Blank	Corpo: Alluminio 5052 Nessuna finitura	Cuerpo: Aluminio 5052 Natural
Stem: Aluminium Natural	Tige: Aluminium Brut	Dorn: Aluminium Blank	Gambo: Alluminio Nessuna finitura	Vástago: Aluminio Natural
IFI 114 Grade 11				



N Rivet AAPS
Protruding head / Tête bombée /
Flachrundkopf / Testa tonda /
Cabeza alomada



N Rivet AALS
Large flange / Tête large /
Flachrundkopf, extragroß /
Testa larga / Cabeza ancha



N Rivet AACS
Countersunk / Tête fraisée
Senkkopf / Testa svasata
Cabeza avellanada

Ø	min. max.		min. max.		Ø D	L	Ø S	AAPS Protruding head			AALS Large flange			AACS Countersunk		
								Ø A	B	Part No. /ref	Ø A	B	Part No. /ref	Ø A	B	Part No. /ref
nom.	min.	max.	min.	max.		max.			max.	AAPS-		max.	AALS-		ref.	AACS-
3/32" (2.4 mm)	.020	.125	.097	.100	.093	.250	.057	.188	.032	-03-02				.174	.027	-03-02
	.126	.250								-03-04						-03-04
	.251	.375								-03-06						-03-06
1/8" (3.2 mm)	.020	.062	.129	.133	.125	.212	.076	.250	.040	-04-01	.375	.065		.220	.031	-04-01
	.063	.125								-04-02						-04-02
	.126	.187								-04-03						-04-03
	.188	.250								-04-04						-04-04
	.251	.312								-04-05						-04-05
	.313	.375								-04-06						-04-06
	.376	.437								-04-07						-04-07
	.438	.500								-04-08						-04-08
	.501	.562								-04-09						-04-09
	.563	.625								-04-10						-04-10
5/32" (4.0 mm)	.020	.125	.160	.164	.156	.300	.095	.312	.050	-05-02	.468	.075		.281	.040	-05-02
	.126	.187								-05-03						-05-03
	.188	.250								-05-04						-05-04
	.251	.375								-05-06						-05-06
	.376	.500								-05-08						-05-08
	.501	.625								-05-10						-05-10
3/16" (4.8 mm)	.020	.125	.192	.196	.187	.325	.114	.375	.060	-06-02	.625	.092		.348	.050	-06-02
	.126	.250								-06-04						-06-04
	.251	.375								-06-06						-06-06
	.376	.500								-06-08						-06-08
	.501	.625								-06-10						-06-10
	.626	.750								-06-12						-06-12
	.751	.875								-06-14						-06-14
	.876	1.000								-06-16						-06-16

all dimensions in inches / en pouces / alle Maße in Zoll / in pollici / en pulgadas



An Acument™ Global Technologies Company



www.avdel-global.com

© 2007 Acument Intellectual Properties, LLC

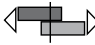

07.2007, page 1/2

Data shown is subject to change without prior notice as a result of continuous product development and improvement policy.
Your local Avdel representative is at your disposal should you need to confirm latest information.

N Rivet AAPS / AALS / AACS

Ø nom.					Ø D	L max.	Ø S	AAPS Protruding head			AALS Large flange			AACS Countersunk		
	min.	max.	min.	max.				Ø A	B max.	Part No. /ref AAPS-	Ø A	B max.	Part No. /ref AALS-	Ø A	B max.	Part No. /ref AACS-
1/4" (6.4 mm)	.020	.125	.257	.261	.250	.375	.151	.500	.080	-08-02	.750	.107	-08-04	.468	.071	-08-04
	.126	.250								-08-04						-08-06
	.251	.375								-08-06						-08-08
	.376	.500								-08-08						-08-10
	.501	.625								-08-10						-08-12
	.626	.750								-08-12						-08-14
	.751	.875								-08-14						-08-16
	.876	1.000								-08-16						-08-16

all dimensions in inches / en pouces / alle Maße in Zoll / in pollici / en pulgadas

Ø nom.	 lbf min. ¹⁾	 lbf min. ¹⁾
3/32" (2.4 mm)	70	80
1/8" (3.2 mm)	120	150
5/32" (4.0 mm)	190	230
3/16" (4.8 mm)	260	320
1/4" (6.4 mm)	460	560

1) Tested per IFI 135 Specification 2.1 and 2.2
 Testé par spécification IFI 135 2.1 et 2.2
 Getestet nach IFI 135 Spezifikation 2.1 und 2.2
 Provato secondo specifica IFI 135 2.1 e 2.2
 Comprobado según especificación IFI 135 2.1 y 2.2